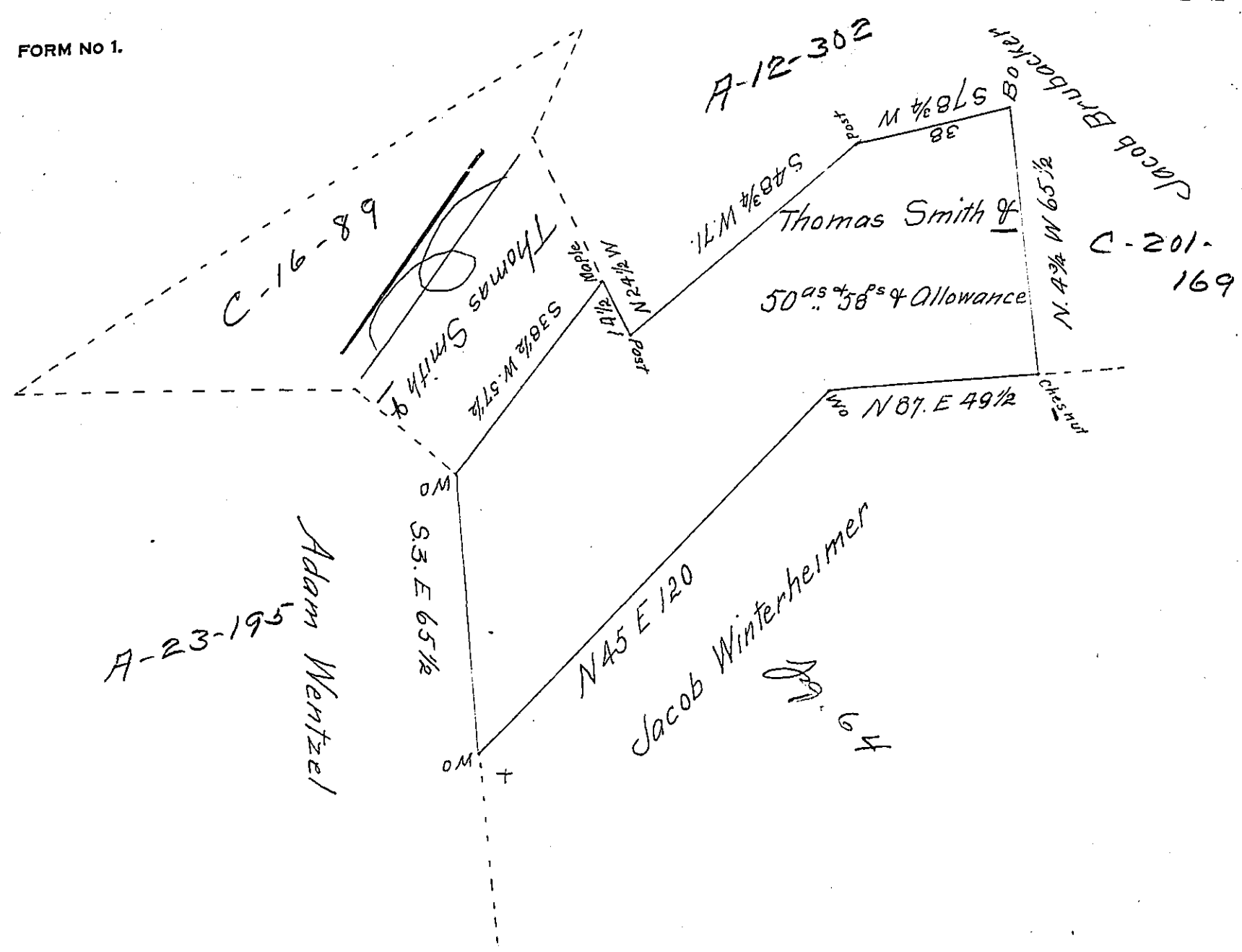


FORM NO 1.



A Draught of a Tract of Land Situate in Martuk Township in the County of Lancaster Containing Fifty Acres & fifty Eight perches and the usual Allowance of Six p Cent for Roads, part of a larger Tract Containing 85^{acs} 148^{ps} & allowance by Warrant dated the 9th of March A.D. 1759. Granted to Thomas Smith &c - - - - Survey the 1st of august A.D. 1811. for Christopher Winters.

To Andrew Porter Esq^r {
 Surveyor General

J^r Jacob Hibshman D.S.

IN TESTIMONY that the above is a copy of the original remaining on file in the Department of Internal Affairs of Pennsylvania, made conformably to an Act of Assembly approved the 16th day of February, 1833, I have hereunto set my Hand and caused the Seal of said Department to be affixed at Harrisburg, this 25th day of October 1907

Henry Horvath
 Secretary of Internal Affairs.